

A comprehensive state-of-the-art web-based solution that allows for structuring, analysis and reporting on the Chinese ABS market.

## Key Features



### Integrated Platform Analytics

The China Structured Finance Portal allows users to monitor performance data, conduct thorough cashflow analysis, and build waterfall models. It is an integrated platform that connects Moody's China ABS cashflow library with accurate and timely static and performance data. Powered by Moody's Analytics, Inc. (Moody's Analytics) advanced cashflow engine, investors can easily run scenario analysis anywhere with internet access. We serve both domestic and overseas clients with full support for both Chinese and English languages.

建元2019年第七期个人住房抵押贷款资产支持证券					
Reporting Date: 2020-03-19					
DEAL BASIC INFORMATION					
Deal Name	建元2019年第七期个人住房抵押贷款资产支持证券	Cut Off Date	2019-04-28	Originator	中国建设银行股份有限公司
Total Offering Size	9,869,180,204.42	Closing Date	2019-08-09	Underwriter	招商证券股份有限公司, 中国国际金融股份有限公司, 汇丰银行(中国)有限公司, 招商银行股份有限公司
Initial Pool Balance	9,869,180,200.00	First Payment Date	2019-09-26	Servicer	中国建设银行股份有限公司
Asset Type	RMBS	Maturity	2043-11-26	Rating Agency	中债资信评估有限责任公司, 中国工商银行信用评级有限责任公司
Status	Active	Pay Frequency	Monthly	Accounting & Tax Consultant	毕马威华振会计师事务所
WA Spread %	1.69	Revolving Flag	No	Legal Counsel	北京市中伦律师事务所



### Enhanced Chinese ABS Content

Our modern technology gives users an intuitive way to access Moody's Analytics comprehensive and up-to-date Chinese ABS data and model libraries. This web-based platform supports workflows to help users standardize and derive data and build models internally. Our industry content provides the information you will need for making investment decisions in this market.

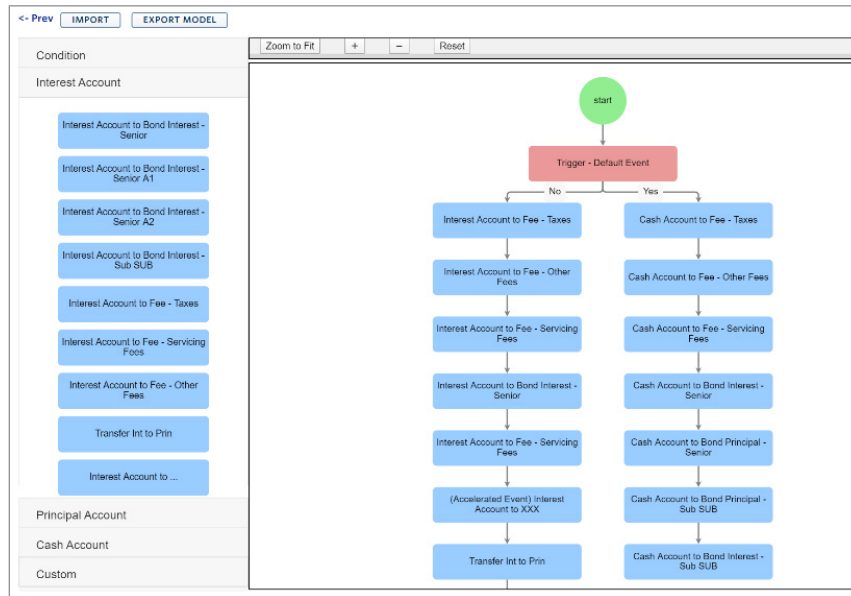
RECENT ISSUED DEALS		
DEAL NAME	ORIGINATOR	CLOSING DATE
吉时代2020年第一期个人汽车抵押贷款资产支持证券	吉致汽车金融有限公司	2020-03
钱江2020年第一期信贷资产支持证券	杭州银行股份有限公司	2020-03
捷鑫2020年第二期个人消费贷款资产支持证券	捷信消费金融有限公司	2020-03
建元2020年第一期个人住房抵押贷款资产支持证券	中国建设银行股份有限公司	2020-03
浦鑫归航2020年第一期不良资产支持证券	上海浦东发展银行股份有限公司	2020-03
速利银丰中国2020年第一期个人汽车抵押贷款支持证券	梅赛德斯-奔驰汽车金融有限公司	2020-03
瑞泽2020年第一期个人汽车抵押贷款资产支持证券	奇瑞徽银汽车金融股份有限公司	2020-03
兴银2020年第二期疫情防控信贷资产支持证券	兴业银行股份有限公司	2020-03
盛世2020年第一期信贷资产支持证券	盛京银行股份有限公司	2020-03
睿程2020年第一期个人汽车抵押贷款资产支持证券	北京现代汽车金融有限公司	2020-03

1 to 10 | 1 2 3 >>



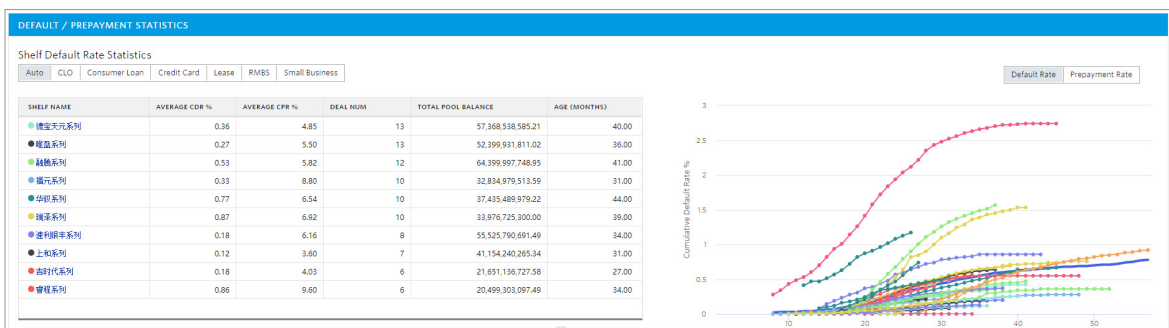
## Cashflow Structuring Capabilities

We offer an optional module with complete waterfall structuring functionality covering all deal types in the Chinese ABS market. With an easy to use drag-and-drop waterfall design feature, users have the flexibility to build their own cashflow models on our website.



## Enhanced Visualizations

The platform offers enhanced visualizations for reporting on all levels of data in the Chinese securitization market. It aggregates current deal data across multiple dimensions so users can easily analyze their holdings and assess potential risk across portfolios





## CONTACT US

Find out more information about Moody's Analytics award winning products and solutions.

[www.moodyanalytics.com/contact-us](http://www.moodyanalytics.com/contact-us)

### CONTACT DETAILS

For more information, contact us at [sfportalsupport@moody.com](mailto:sfportalsupport@moody.com) or alternatively at a location below:

**AMERICAS**

+1.212.553.1653

[clientservices@moody.com](mailto:clientservices@moody.com)

**EMEA**

+44.20.7772.5454

[clientservices.emea@moody.com](mailto:clientservices.emea@moody.com)

**ASIA (EXCLUDING JAPAN)**

+852.3551.3077

[clientservices.asia@moody.com](mailto:clientservices.asia@moody.com)

**JAPAN**

+81.3.5408.4100

[clientservices.japan@moody.com](mailto:clientservices.japan@moody.com)

© 2020 Moody's Analytics, Inc. and/or its licensors and affiliates. All rights reserved.