

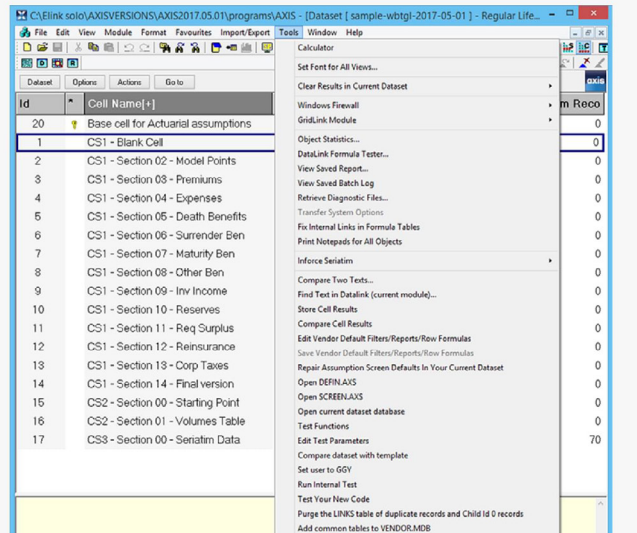
Moody's Analytics AXIS actuarial system is widely used by life insurers, reinsurers, and consulting firms for pricing, reserving, asset and liability management (ALM), financial modeling, capital calculations, and hedging. The AXIS actuarial system provides the flexibility to deploy large-scale computing power through an advanced cloud-based delivery platform or installed software.

Deploy large-scale computing power for actuarial and financial information

- » Access software for pricing, valuation, modeling, financial projections, asset and liability management, and surplus adequacy requirements.
- » Project future monthly cash flows from starting liabilities and invested assets, for up to 100 years.

- » Generate valuation data, for financial reporting, and time-critical production of actuarial reserves simultaneously, on statutory, tax reporting, and other bases.
- » Evaluate blocks of business using projections of profitability and movements in surplus; evaluate the impact of reinsurance or changes in premiums and other plan values.
- » Benefit from the fully integrated additional modules for liability products, in-force assets, and reinvestment assets.

Additional tools for pricing, reserving, ALM, financial modeling, capital calculations, and hedging



Dataset Parameters

Custom Codes | Duration Calculations | Category Results | Reserve Order | Controls

User Values | Accounting Bases | Excel | Advanced | Data Storage | Global Parameters

Period And Dates | Scenario | Earnings By Source | Report Preference | Periodicity Display

Flexible scenario format

Current future scenario
 [1] Gen 1 02031999 153735 1 376168632 1 Select...
 Scenario stored on disk: [1] Gen 1 02031999 153735 1 376168632 1

Current historic scenario
 [1] Historic Scenario Select...

Current scenario processing screen
 [-1] Vendor Defaults Select...

Current valuation scenario at valuation date
 No Selection Select...

Single valuation scenario
 No Selection Select...

Multiple valuation scenarios
 No Selection Select...

Future scenario start date
 N months since valuation date N = 1

Current asset pricing model screen
 No Selection Select...

Negative rates
 Do not allow

Define dataset parameters for valuation calculations

Select run options

Cell Run Options

Run type: Serialtm valuation & projection + volume table projection

Volume table final
 Run all financial
 Run the financial

Serialtm record selection
 Run all issue dates
 Run issues on or after year Y month M and on or before year Y month M
 Y = 1900 M = 1
 Y = 2125 M = 12
 Run all policies
 Run first N policies N = 1
 Run one every N policies N = 1
 Run only record no. N N = 1

Ignore serialtm optional fields

Support multiple business applications

- » Perform a wide variety of actuarial applications with the same software, utilizing common assumption and business data.
- » Produce full financial projections with customizable reports, based on in-force business and defined levels of sales of new business.

- » Perform stochastic risk analyses of future economic scenarios using mathematical models with user-defined parameters, and project asset and liability performance linked to scenarios.
- » Design new products and solutions for life insurance, disability insurance, critical illness, savings products, and payout annuities to reach target profitability or other performance metrics.
- » Analyze policy and calendar year information to help understand the effect on both the income statement and balance sheet.



CONTACT US

Find out more information about Moody's Analytics award winning products and solutions.

www.moodyanalytics.com/contact-us

CONTACT DETAILS

Visit us at moodyanalytics.com or contact us at a location below.

For more information, please contact Paul Arvidson at Paul.Arvidson@moody.com

AMERICAS

+1.212.553.1653

clientservices@moody.com

EMEA

+44.20.7772.5454

clientservices.emea@moody.com

ASIA (EXCLUDING JAPAN)

+852.3551.3077

clientservices.asia@moody.com

JAPAN

+81.3.5408.4100

clientservices.japan@moody.com