

U.S. Metro & State Markets

FROM MOODY'S ECONOMY.COM

SUCCESSFULLY ASSESS AND MANAGE THE RISKS AND OPPORTUNITIES STEMMING FROM AN INCREASINGLY COMPLEX AND RAPIDLY CHANGING U.S. REGIONAL ECONOMY USING MOODY'S ECONOMY.COM'S STATE AND METRO SERVICES:

- » Compare and evaluate site locations
- » Allocate sales resources more efficiently
- » Analyze real estate markets
- » Forecast state and metro revenues
- » Incorporate regional drivers for service area models
- » Measure the impact of external shocks such as oil prices, weather, global events (quotas, tariffs, currency movements), etc. on regional economies

Comprehensive Coverage

In-depth analysis of U.S. states and metro area economies covering each of the nation's states, the District of Columbia, selected territories and all metropolitan areas. Included in the coverage are history and forecast for county level data.

Regional Forecasts

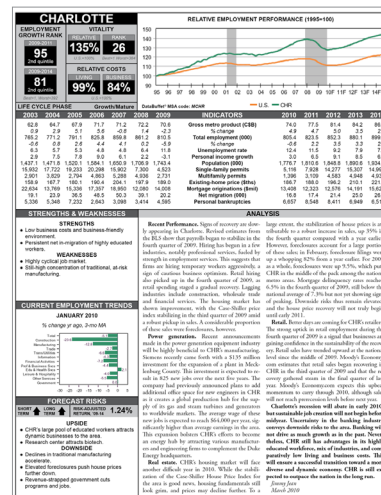
Setting the industry standard with the most up to date forecast available for states, metropolitan areas and counties. Our simultaneous econometric model is run each month forecasting at least 70 variables per geography. These corresponding databases are the perfect complement to the analysis and indicators found in our regional reports.

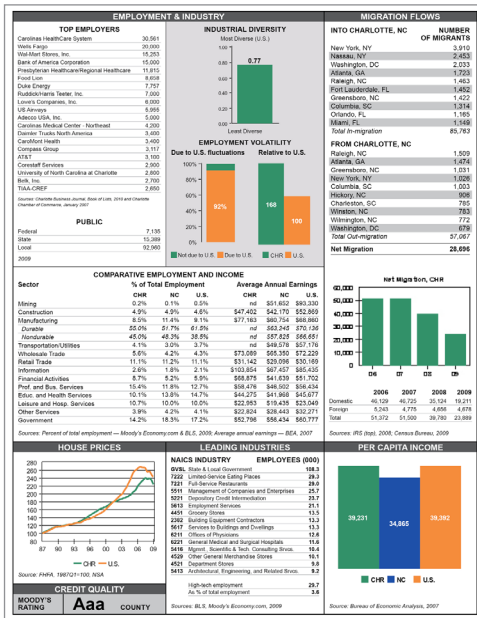
Key Indicators Track Performance

Concepts covered include gross state/metro product, employment, income, population, housing activity, migration flows, and personal bankruptcies.

Proprietary Indices

Cost of doing business, cost of living, index of vitality, life cycle phase, and risk adjusted return are indices that we have developed to evaluate and compare the health of state and metropolitan areas.





Assess Risks and Opportunities

Each report examines strengths and weaknesses, employment trends and upside and downside risks. Rankings allow you to compare how your market area is performing against others.

Snapshot of Industrial Structure

Top employers, leading industries, industrial diversity and volatility, migration flows, housing prices and income provide a snapshot of the industrial structure. Find state exports by destination and commodity.

Our Economists Understand the Forces that Shape Your Environment

Our economists are organized in a unique manner that allows them to develop expertise across a broad range of subjects rather than being limited to one vertical niche.

A Relationship You Can Trust

We are always available to you via phone, email, fax, teleconferences, Executive Briefings and conferences. Our dedicated client service staff is there to provide ongoing assistance with questions that you might have.

Consulting the Right Way

Our economists have significant experience in analyzing specific regional issues. We can examine your markets down to the county level.

Pinpoint employment risks and opportunities with our list of top employers.

Assess the industrial diversity and employment volatility for each state/metro.

Quickly compare housing prices relative to the U.S.

Where do new residents come from and where do departing residents go?

CONTACT US

For further information contact us at a location below:

U.S./CANADA
+1 866.275.3266

EMEA
+44 (0) 20.7772.1000

ASIA/PACIFIC
+61 2 9270 8111

OTHER LOCATIONS
+1 610.235.5299

Email us: help@economy.com
Or visit us: www.economy.com

Copyright © 2010, Moody's Analytics, Inc. All Rights Reserved.

Moody's
ANALYTICS